

New England Classic Stitch

Purple Iris

Item #OF114

By Lisa Manning-Smith © 2010

Pattern Designed by New England Classic Stitch

Customerservice@NewEnglandClassicStitch.com

© 2010 New England Classic Stitch



Purple Iris


Author: Lisa Manning-Smith
Company: New England Classic Stitch
Copyright: (C) 2010 New England Classic Stitch. All Rights Reserved
Website: NewEnglandClassicStitch.com
Fabric: 14 Count on Antique White
Grid Size: 158W x 31H
Design Area: 11.29" x 1.86" (158 x 26 stitches)



Legend:

A B [2] DMC-341 ANC-117 blue violet - lt
B C [2] DMC-743 ANC-302 yellow - md

C D [2] DMC-986 ANC-246 forest green - vy dk
D E [2] DMC-333 ANC-110 blue violet - vy dk

 This sample was used with a 12" x 9.5" 14 Count towel. The design area is 11.3" x 1.86".

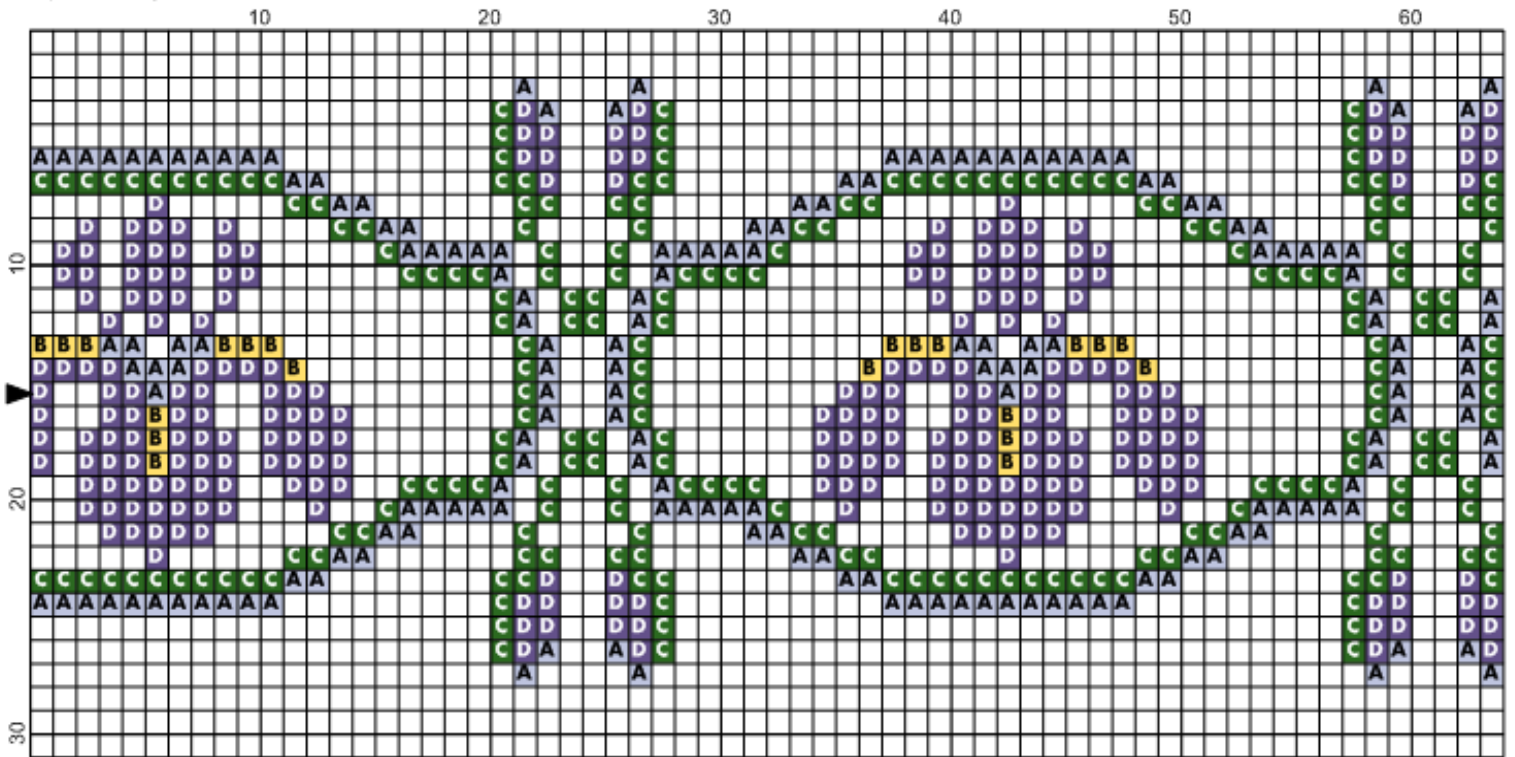
Use two(2) strands each on all cross stitches.

If you decide to use a different thread count, be sure to adjust your fabric size accordingly. For sizing examples, visit our page regarding types of fabrics where we have a handy conversion chart you can use!
<http://newenglandclassicstitch.com/TypesofFabrics.aspx>.

	32 count-Over One	28 count- Over One	22 count	18 count
Finished size will be	5 x 1	5 5/8 x 1 1/8	7 1/8 x 1 3/8	8 3/4 x 1 3/4
Amount of fabric to use	9 x 5	10x 6	12 x 6	13 x 6

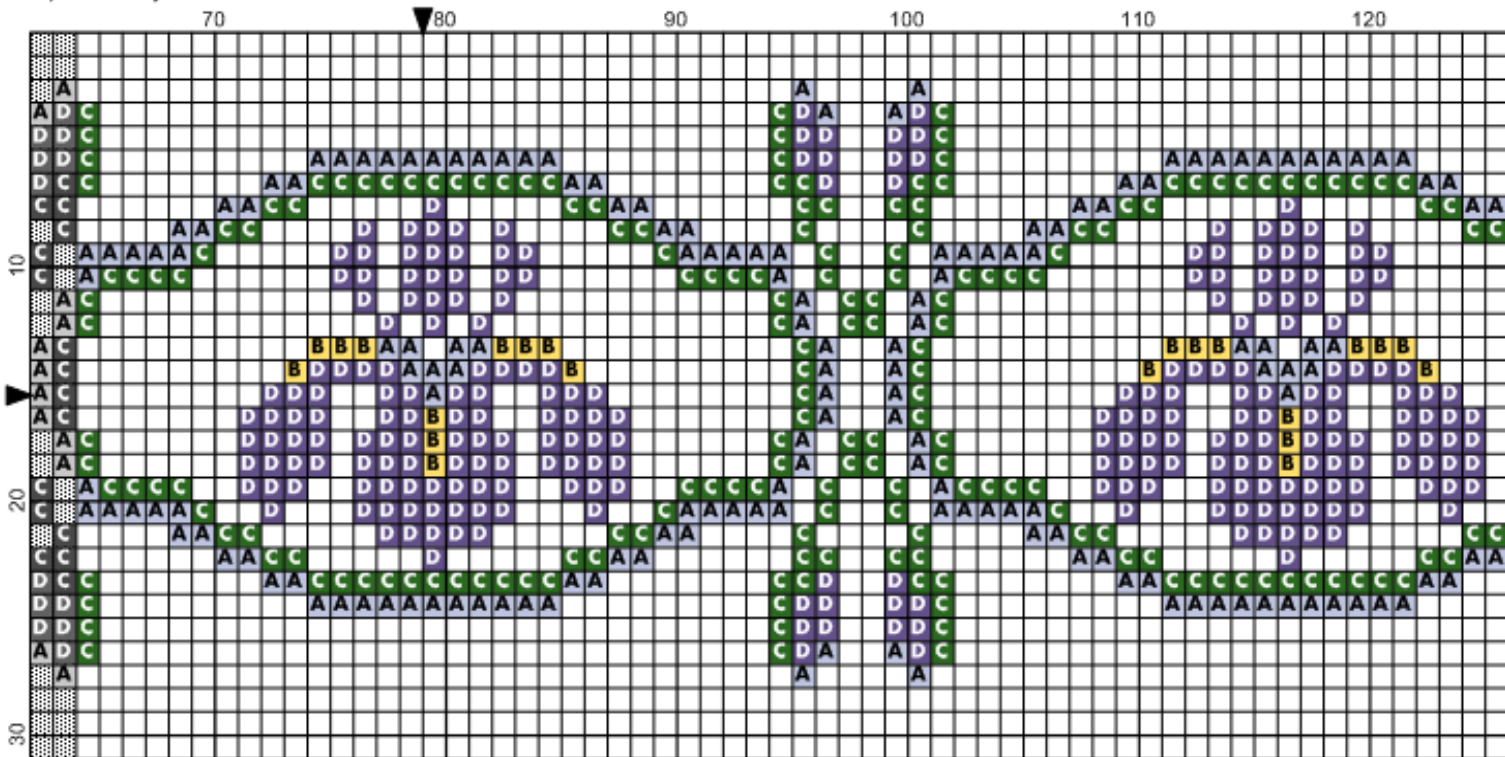
	16 count or 32 count Over Two	14 count or 28 count Over Two
Finished size will be	9 7/8 x 2	11 1/4 x 2 1/4
Amount of fabric to use	14 x 6	16 x 7

Purple Iris By LAMS



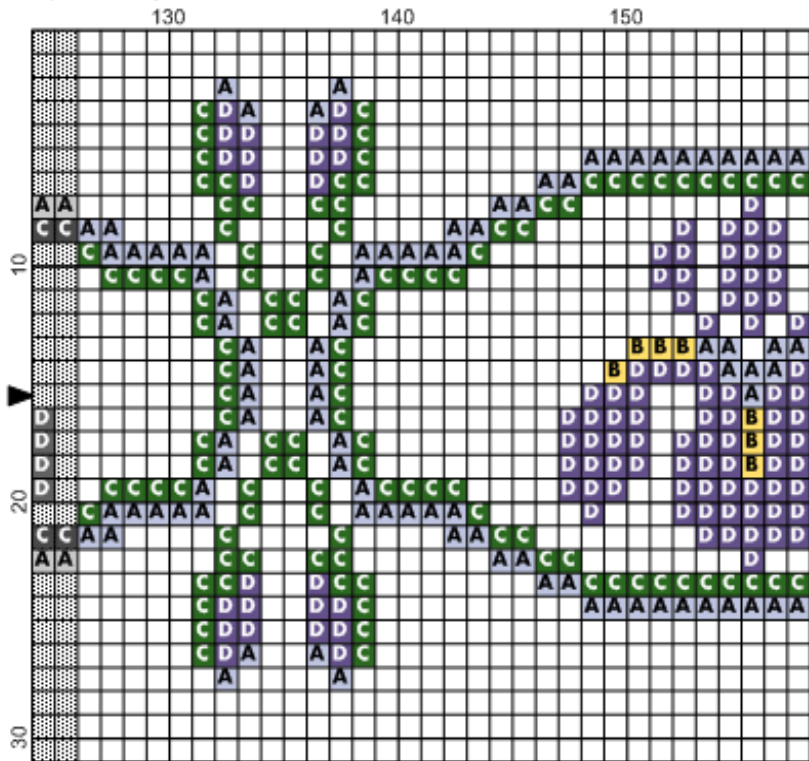
(C) 2010 New England Classic Stitch. All Rights Reserved

Purple Iris By LAMS



(C) 2010 New England Classic Stitch. All Rights Reserved

Purple Iris By LAMS



(C) 2010 New England Classic Stitch. All Rights Reserved